



GOVERNMENT OF INDIA
Ministry of Water Resources,
River Development and Ganga Rejuvenation
BRAHMAPUTRA BOARD

TENDER DOCUMENT

Group No. 1

NIT No. BB/EE/NBD/2016-17/08/1280 dated 19.12.2016

Repairing of Assam Type Executive Engineer's Office Building (Unit-II) at Barsarkuchi Office Complex, Brahmaputra Board, Nalbari (Occupied by EE, NBD) including earth filling and brick soling between apron drains of the O/O the Executive Engineer and Asstt. Executive Engineer, Nalbari Sub-Division No-II.

NALBARI DIVISION
NALBARI

No. BB/EE/NBD/2016-17/08/1280
 Government of India
 Ministry of Water Resources,
 River Development and Ganga Rejuvenation
 Office of the Executive Engineer
 Nalbari Division, Brahmaputra Board
 Email – bbnalbaridiv@gmail.com

Barsarkuchi, Nalbari - 781337
 Dated 19.12.2016

NOTICE INVITING TENDER

Sealed and separate Item Rate Tender in prescribed forms are invited on behalf of the Chairman, Brahmaputra Board from registered approved and eligible contractors of CPWD, Railways, P&T, MES and State Government Departments including PWD / Irrigation / Water Resources / Public Health Engineering Department for the following works –

| Gr. No | Name of Work | Location | Estimated Amount (Rs.) | Earnest Money (Rs.) | Cost of Tender (Rs.) | Time of completion (Days) |
|--------|---|--|------------------------|---------------------|----------------------|---------------------------|
| 1. | Repairing of Assam Type Executive Engineer's Office Building (Unit-II) at Barsarkuchi Office Complex, Brahmaputra Board, Nalbari (Occupied by EE, NBD) including earth filling and brick soling between apron drains of the O/O the Executive Engineer and Asstt. Executive Engineer, Nalbari Sub-Division No-II. | Barsarkuchi, Nalbari (Building No. 2) | 1,52,850.00 | 3057.00 | 500.00 | 30 |
| 2 | Repairing of Assam Type Executive Engineer quarter (Unit-II) at Barsarkuchi Office Complex, Brahmaputra Board, Nalbari (Occupied by the office of AEE, NSD-I) | Barsarkuchi Nalbari (Building No. 7) | 75,550.00 | 1511.00 | 150.00 | 30 |
| 3 | Repairing of Assam Type Sub-Division Office Building (Unit-I) at Barsarkuchi Office Complex, Brahmaputra Board, Nalbari (Occupied by the office of AEE, NSD-II) | Barsarkuchi Nalbari (Building No. 1) | 86,650.00 | 1733.00 | 150.00 | 25 |
| 4 | Repairing of Assam Type Asstt. Executive Engineer's Office Building (Unit-II) at Barsarkuchi Office Complex, Brahmaputra Board, Nalbari. (Occupied as Store) | Barsarkuchi Nalbari (Building No. 5) | 1,18,750.00 | 2375.00 | 500.00 | 30 |

The intending Bidder may collect the detailed Tender Document containing terms & condition of contract from this office w.e.f **20.12.2016** on all working days up to **1500 Hours of 27.12.2016** on payment of the cost of Tender Document as shown above, in the shape of crossed IPO / Demand Draft / Bankers Cheque drawn in favour of the **Financial Adviser, Brahmaputra Board, Basistha, Guwahati - 29**. The Bidder should produce the original copies of up to date Registration Certificate, Income Tax Clearance Certificate / PAN card, VAT registration certificate at the time of procurement of Tender Document. The Bidder should submit requisite Earnest Money as shown above, in the shape of Fixed Deposit Receipt / Demand Draft / Deposit at Call Receipt drawn from any scheduled Bank guaranteed by the Reserve Bank of India and payable at Nalbari in favour of the Executive Engineer, Nalbari Division, Brahmaputra Board, Nalbari. Sealed Tender will be received

in the office of the undersigned up to **1500 Hours** of **29.12.2016** and will be opened on the same day at **1530 Hours** in presence of the Bidder or their authorised agent.

The Tender can be also be seen / downloaded from the website www.brahmaputraboard.gov.in. Bidders will have to deposit the cost of Tender Documents, if downloaded, at the time of submission of Tender Document.

The undersigned reserves the right to reject any or all tenders without assigning any reason thereof and is not bound to accept the lowest tender.

Executive Engineer
Nalbari Division

Copy to :-

1. The Deputy Commissioner, Nalbari District, Nalbari for information and wide circulation.
2. The Superintending Engineer, Nalbari Circle, Brahmaputra Board, Nalbari for favour of kind information.
3. The Executive Engineer, Water Resources Department, Government of Assam, Nalbari for wide circulation.
4. The Asstt. Executive Engineer, Nalbari Sub-Division-I / Nalbari Sub-Division-II / Rangia Sub-Division, Brahmaputra Board, Nalbari / Rangia for information and wide circulation.
5. The In-charge, I.T. Cell, Brahmaputra Board, Basistha, Guwahati-29 for information and publication through Brahmaputra Board website.
6. Notice Board.

DETAILED TERMS & CONDITIONS

1. **Eligibility Criteria** : the bidders should furnish the following information / documents at the time of submission of bid for fulfillment of eligibility criteria –
 - a. The bidder should have successfully completed works as mentioned below during the last 7 (seven) seven years ending last day of the month 31st March, 2016 -
 - i. Three similar works each cost not less than 40% of the estimated cost or two similar works each cost not less than 60% of the estimated cost or one similar work costing not less than 80% of the estimated cost. Self attested copy (s) of work order and completion certificate(s) is to be furnished by the bidder along with his tender. Similar work means construction / repairing of buildings and other civil works.
 - b. Up to date registration certificate of government department.
 - c. Income tax clearance certificate / PAN Card
 - d. VAT Registration Certificate.
2. **Purchase of Tender Document** : The Non-transferable Tender Document can be obtained from the office of the Executive Engineer, Nalbari Division, Brahmaputra Board, Nalbari on payment of cost of tender document as per requirement in the NIT in the shape of crossed IPO/ Demand draft/ Banker cheque drawn in favour of the Financial Adviser, Brahmaputra Board, Basistha, Guwahati-29 on all working days from 1100 hours to 1500 hours. The bidder should produce original copies of up to date Registration Certificate, Income Tax Clearance Certificate / PAN card, VAT registration certificate at the time of procurement of Tender Document.
3. **Earnest Money** : The Tender shall be submitted in sealed cover along with Earnest money as stated above for each group in the form of Fixed Deposit Receipt / Demand Draft / Deposit at Call Receipt drawn from any scheduled Bank guaranteed by the Reserve Bank of India and payable at Nalbari in favour of the Executive Engineer, Nalbari Division, Brahmaputra Board, Nalbari.

The Earnest Money of the successful Bidder will be retained and will form a part of the Security Deposit till completion of the work. The Earnest Money of the unsuccessful Bidder will be returned after finalization of the Bid.
4. **Quoted Rate** : The rate shall be quoted Item wise as per schedule inclusive of all taxes like Income Tax, Value Added Tax (VAT), Forest Royalty or any other taxes as applicable. The rate should be quoted both in figure and words. Overwriting should be avoided and the bidder shall duly initial in the corrections made, if any. In case of any discrepancy in figure and word, rate quoted in figure will be considered for evaluation.
5. **Validity of Tender** : The validity of the Tender is 30 (thirty days) from the date of opening of Tender.
6. **Time of completion** : The completion time for the work is as per NIT from the 10th day of the issue of the formal work order / written order to commence the work.
7. **Tax deduction** : The necessary tax like Income Tax, VAT, or any other tax, if applicable will be deducted from the bill value in due course of time as per rule. Contractor shall submit documents of forest royalty, if any.

8. **Submission of Tender :** The complete Tender Document along with self attested copies of experience of successfully completed works, up to date Registration Certificate, Income Tax Clearance Certificate / PAN card, VAT registration certificate, cost of Tender (if downloaded) and Earnest Money as per terms and condition stipulated in Tender Document should be submitted in a Sealed Cover indicating the name of work, NIT No. etc. and to be dropped in the Tender Box kept in the office of the Executive Engineer on or before the scheduled date and time. The Sealed Envelope containing complete Tender Document is to be addressed to the Executive Engineer, Nalbari Division, Brahmaputra Board, Nalbari. All pages of the Tender Document should be duly signed by the Bidder.
9. **Rejection of Tender :** The Officer inviting Tender reserves the right of rejecting all or any Tenders without assigning any reason thereof and is not bound to accept the lowest Tender. Tenders which do not fulfill the prescribed terms and conditions of the contract or incomplete in any respect are liable to be rejected. Tenders which are not as per terms and conditions or contain too much error / corrections and / or absurd rates are also liable for rejection without assigning any reason. Canvassing in connection with the Tender is strictly prohibited and the Tenders submitted by the Bidder who resort to canvassing will be liable for rejection.
10. **Opening of Tender :** The Tender will be open on the Scheduled Date, time and place as mentioned in Notice Inviting Tender. If the Schedule Date of opening coincides with a Government Holiday then the Tender will be opened on the next working day. The interested Bidder or their authorized agent / representative may present at the time of opening of the Tender.
11. **Acceptance of Tender :** The acceptance of the Tender will rest with the Executive Engineer, Nalbari Division, Brahmaputra Board, Nalbari and does not bind him to accept the lowest Rates.

Executive Engineer
Nalbari Division

Name of work :- Repairing of Assam Type Executive Engineer's Office Building (Unit-II) at Barsarkuchi Office Complex, Brahmaputra Board, Nalbari (Occupied by EE, NBD) including earth filling and brick soling between apron drains of the O/O the Executive Engineer and Asstt. Executive Engineer, Nalbari Sub-Division No-II.

SCHEDULE OF ITEM

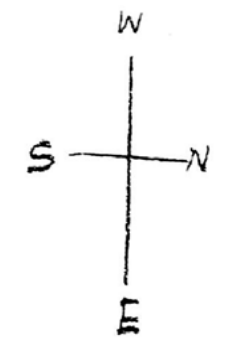
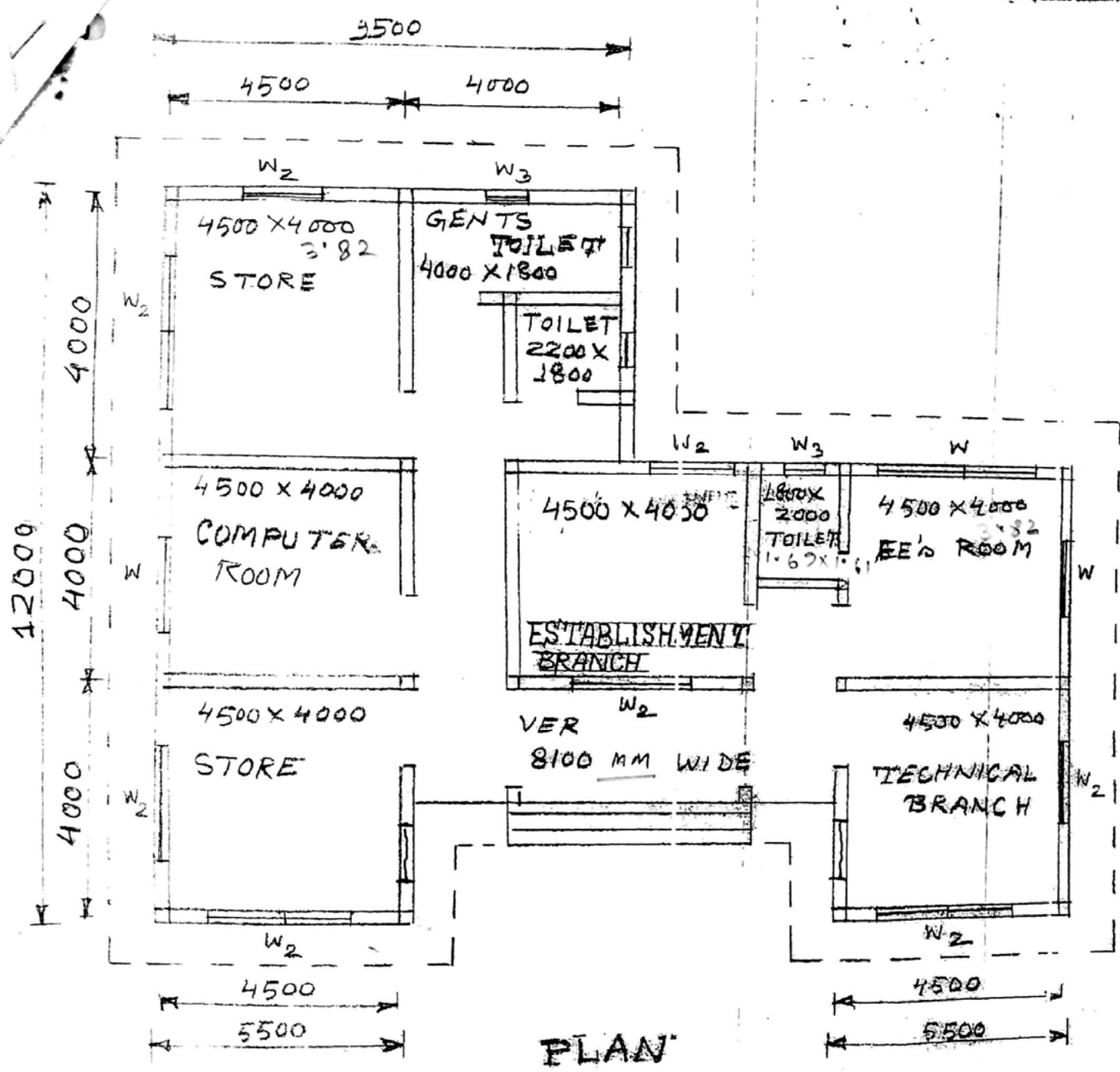
| Item No. | Description | Qty. | Unit | Rate in fig | Rate in words |
|----------|---|-------|------|-------------|---------------|
| 1 | Demolishing skirting /dado in walls/RCC & PCC members without causing damage to walls/member without causing damage to walls/ member upto any height including disposal of debris as directed for all levels. | 0.13 | Sqm | | |
| 2 | Demolishing CC floors of various thickness including top layer and base course and disposal of debris as directed for all levels. | 19.72 | Sqm | | |
| 3 | Providing VITRIFIED floor tiles of approved quality of specified size, shape and thickness not less than 18mm on floors, skirtings, risers and treads of steps over 15mm thick base of cement mortar in prop.1:3 (1 cement : 3 coarse sand) including cutting where necessary finished with flush pointing with Fix-A-Tile (Choksey/Sika/Pedelite/Rouf) / white cement slurry mixed with approved pigment to match the shade of the tiles, complete at all levels as specified and directed. (Coloured pigment should be in conformity with colour of tiles and as approved and directed by the Department) a) Normal range Somany/Orient/Nitco/Varmora Jhonson Make ii) (size 600 mm x 600 mm and above) | 17.00 | Sqm | | |
| 4 | Providing ceramic tiles of approved quality, size, shape and thickness not less than 8mm on floor and skirtings and rises of steps over cement mortar bed 15mm thick in prop. 1:3 (1 cement : 3 coarse sand) including cutting where necessary finished with flush pointing with Fix-A-Tile (Choksey/ Sika/ Pedelite/ Rouf)/ white cement slurry mixed with approved pigment to match shade of tiles complete at all levels as specified and directed. (Cement plastering to be measured and paid separately). (Coloured pigment should be in conformity with colour of tiles and as approved and directed by the Department). (a) Normal range (Somany / Nitco / Asian Make) (i) Of size 300 mm x 300 mm and above | 2.72 | Sq.m | | |
| 5 | Providing polished ceramic wall tiles of approved quality, size, shape and thickness not less than 8 mm on walls and skirtings and rises of steps over cement mortar bed 10 mm thick in prop. 1:3 (1 cement : 3 coarse sand) including cutting where necessary finished with flush pointing with Fix-A-Tile (Choksey/ Sika/ Pedelite/ Rouf)/ white cement slurry mixed with approved pigment to match shade of tiles complete at all levels as specified and directed. (Cement plastering to be measured and paid separately). (Coloured pigment should be in conformity with colour of tiles and as approved and directed by the Department). (Walls means both interior and exterior walls) a) Normal range Somany/Orient/Nitco/Asian Make (size 200 mm x 300 mm and above) i) Nitco made | 8.78 | Sq.m | | |

| Item No. | Description | Qty. | Unit | Rate in fig | Rate in words |
|----------|--|---------|------|-------------|---------------|
| 6 | Removing dry or oil bound distemper by washing and scraping and sand papering the wall surface smooth including necessary repairs to scratches complete. | 511.827 | Sqm | | |
| 7 | Finishing wall with water proofing cement paint of approved brand and manufacture and of required shade on old wall surface (one coat) to give an even shade after thoroughly brooming the surfaces to remove all dirt and remains of loose or softened paint. | 260.834 | Sqm | | |
| 8 | Extra over item no. 7 above for every subsequent coat of water proofing cement paint of approved brand and manufactured | 260.834 | Sqm | | |
| 9 | Distemping with dry distemper of approved brand and manufacture (one coat) and of required shade on old wall surface to give an even shade, after thoroughly brushing the surface clean of all grease, dirt, loose pieces of scales including preparing surface even and sand papered smooth. | 250.993 | Sqm | | |
| 10 | Extra over item no. 9 above for distemping every subsequent coat of distemping with dry distemper of approved brand and manufacturer. | 250.993 | Sqm | | |
| 11 | Removing old paint or or polish from wood and wood based surfaces with caustic soda solution and making the surface even. | 204.750 | Sqm | | |
| 12 | Painting one coat (excluding priming coat) on old wood and wood based surfaces with enamel paint to give an even shade including cleaning the surface of all dirt, dust and other foreign matter sand papering and stopping. (i) Surfaces over 100 mm in width or girth (b) High gloss (Asian paint/Berger paint/ICI paint/J&N paint/Nerolac) | 204.750 | Sqm | | |
| 13 | Extra over item no. 12 for every subsequent coat of paint. (i) Surfaces over 100 mm in width or girth (b) High gloss (Asian paint/Berger paint/ICI paint/J&N paint/Nerolac) | 204.75 | Sqm | | |
| 14 | Synthetic enamel paint, alluminium paint/bituminous paint on steel and other metal surfaces. (i) Removing old paint from steel and other metal surface and making the surface even (a) With hand scraping | 46.96 | Sqm | | |
| 15 | Painting one coat (excluding priming coat) on previously painted steel and other metal surface with enamel paint of approved brand and manufacture (Asian Paint/Berger paint/ICI paint/J&N paint/Nerolac) to give even shade including cleaning the surface of all dirt, dust and other foreign matter. (i) Surfaces over 100 mm in width or girth (b) High gloss (Asian paint/Berger paint/ICI paint/J&N paint/Nerolac) | 46.96 | Sqm | | |
| 16 | Extra over item no. 15 for every subsequent coat (i) Surfaces over 100 mm in width or girth (b) High gloss (Asian paint/Berger paint/ICI paint/J&N paint/Nerolac) | 46.96 | Sqm | | |



| Item No. | Description | Qty. | Unit | Rate in fig | Rate in words |
|----------|--|------|------|-------------|---------------|
| 17 | Supplying, fitting and fixing PVC flushing cistern with all internal fittings with CI brackets including fitting and fixing standard size CP flush pipe, union clamps, etc. complete as directed and specified (pipes will be measured separately) (I) Parryware make (a) White (i) Economy Single Flush (Cat No. C8090/C8055) | 2 | Nos. | | |
| 18 | Providing fitting & fixing stainless steel kitchen sink of Parryware make with CI/MS brackets, C.P. brass chain with rubber plug, PVC waste pipe etc. complete including painting the fittings, cutting & making good the walls wherever required. (Sink cock, stop cocks, waste coupling are to be paid separately). (A) Parryware make (iii) Single Bowl with Drain Board (360x180) Flat Edge-Glossy (Cat.No.C8536) | 1 | No. | | |
| 19 | Supplying fitting and fixing Ajoy Flowguard CPVC (Chlorinated Polyvinyl Chloride) pipes having thermal stability for hot and cold water supply including all CPVC plain and brass threaded fitting including clamps at 1.00 m spacing including joining of pipes and fitting with one step CPVC solvent cement and testing of joints complete at all levels as directed and specified. (i) In internal wall - exposed on wall (a) 15 mm OD | 1 | Rm. | | |
| 20 | Supplying fitting and fixing C.P. bib cock 15 mm dia of approved brand as directed and specified. (G.I. & C.P pipes will be measured separately) (iv) Agmeco brand (ii) Bib Cock with wall Flange CAT No.CC 00201/ CAT No. CN 00201 | 1 | No. | | |
| 21 | Supplying fitting and fixing chrome plated (C.P.) stop-cock of approved brand and size as mentioned below as directed and specified (G.I. & C.P. pipes will be measured separately) (iv) Sona brand (a) 15 mm dia stop-cock male-female/ Angle stop cock | 1 | No. | | |
| 22 | Supplying fitting and fixing pipes with all necessary fittings in exposed or in trenches including trenching and refilling the same etc. complete as directed. (A) G.I. pipe with GI fittings (a) TATA / SAIL (Medium) (i) 15 mm diameter | 9.00 | R.M. | | |
| 23 | Providing, fitting and fixing recessed soap tray / soap dish complete as directed and specified. (a) Parryware Make (ii) Wall Soap tray (Cat. No.C9949) | 2 | No. | | |
| 24 | Raising low site around the building with approved soil obtained from outside by truck carriage including breaking clods, dressing etc. complete including paying necessary forest royalty, sales tax, land compensation, municipal gate fees, if any monopoly duty etc. (profile measurement to be taken and 12.5% deduction for shrinkage to be made from total quantity) etc. complete as directed and specified. (b) Other than Guwahati City | 5.76 | Cum | | |

| Item No. | Description | Qty. | Unit | Rate in fig | Rate in words |
|----------|--|--------|------|-------------|---------------|
| 25 | Providing soling in foundation and under floor with stone/ best quality picked jhama brick, sand packed and laid to level and in panel after preparing the subgrade as directed including all labour and material sand if necessary dewatering, complete. (b) Brick on edge soling | 19.20 | Sqm | | |
| 26 | Labour charges for water proofing work of CGI sheet roofing by providing putty, bitumen, 25mm dia.x3mm thick and 1.6mm thick input washer. | 1 | Job | | |
| 27 | Synthetic enamel paint, aluminium paint/bituminous paint on steel and other metal surfaces. (l) Removing old paint from steel and other metal surface and making the surface even. (a) With hand scraping. | 293.98 | Sqm | | |
| 28 | Painting one coat on old GCI sheets with ready mixed anticorrosive paint of approved brand and shade suitable for painting over GCI sheets to give and even shade including the cleaning the rust patches with every paper, dust, dirt, grease and other foreign matter with water complete. | 293.98 | Sqm | | |
| 29 | Extra over Item No. 28 for every subsequent coat of paint (for one coat). | 293.98 | Sqm | | |

Signature of bidder (s)



PLAN

| | |
|---|---|
| Govt. of India Ministry of Water Resources, RD & GR, Brahmaputra Board | |
| Plan Drawing of Assam type Division Office Building - Unit - II (occupied by the office of EE, NBD) | |
| Drawn by -  |  |
| Checked by - | Submitted by - |